



LEADING THE WORLD IN LUXURIOUS PROPERTIES

Arkland Group is reshaping the entire landscape of real estate construction and is geared towards establishing world-class housing units in Nigeria.

A foremost and privately owned real estate firm that acquires, develops, and invests in various housing properties in Lagos and Abuja.



CONTENTS

- 4** Location Overview
- 5** Project Description
- 7** Location
- 8** House types / Floor Plans
- 21** Amenities
- 23** Tower Layout
- 26** Utilities
- 27** Investment Opportunities
- 29** Partners
- 30** Contact Us



A LIFE OF GRANDEUR & COMFORT

Located amidst the shimmering waters of the Lagos Lagoon, Banana Island is more than a geographical marvel: it's a promise of a lifestyle defined by opulence and exclusivity.

This coveted destination stands as the residence of choice for some of Nigeria and Africa's most affluent and influential individuals. Within the confines of this prestigious enclave, residents are treated to a haven of serenity and security, complemented by world-class infrastructure and state-of-the-art facilities.

In essence, Banana Island transcends the ordinary, offering a life of grandeur and comfort that is unparalleled in the region. It stands as a beacon of luxury, attracting those who appreciate the finer things in life and seek to experience the epitome of affluent living on the shores of Lagos.

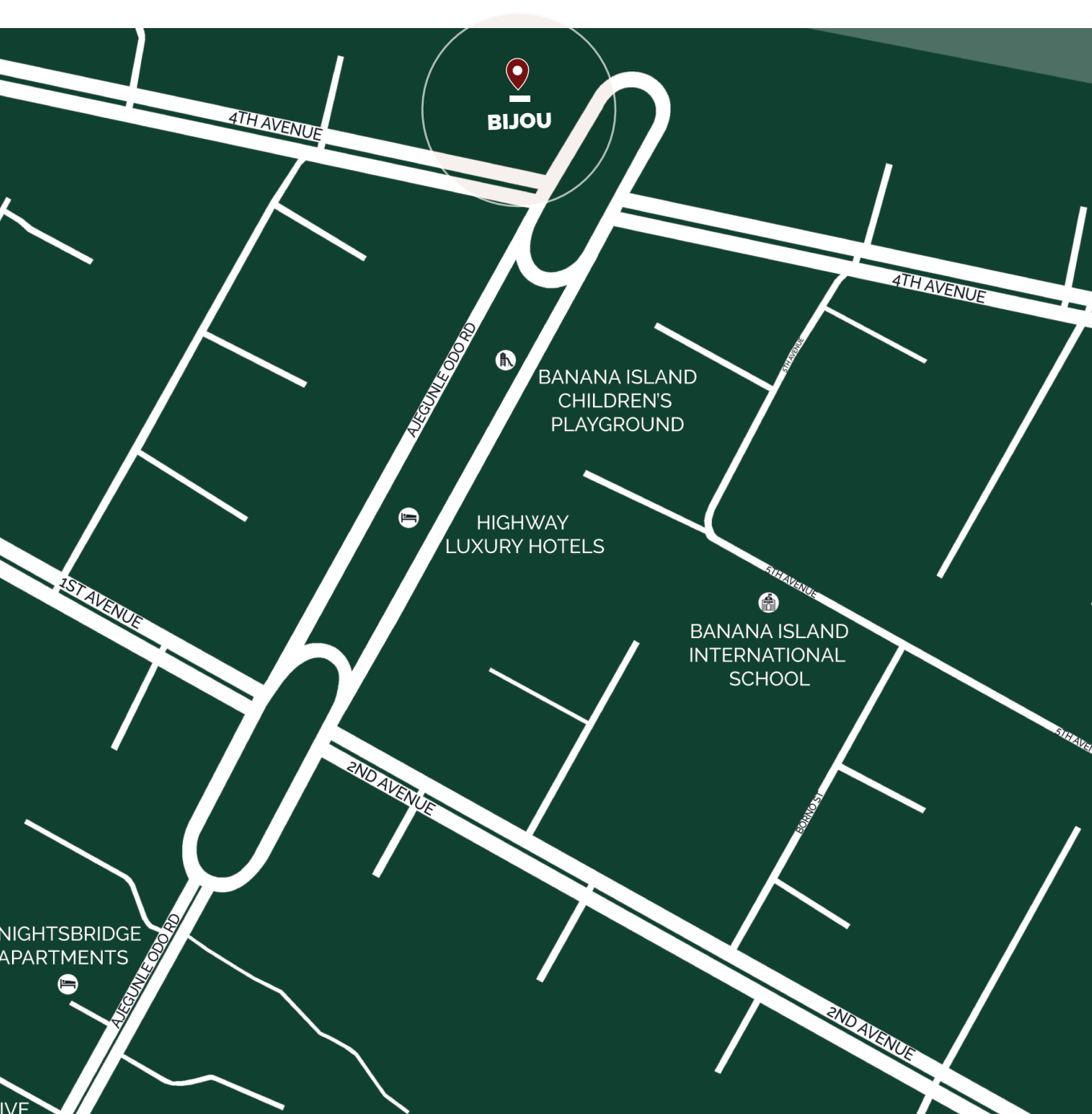
BIJOU

Originating from the French word 'Jewel', Bijou Tower is a royal treasure living up to its name in the heart of Banana Island, Lagos, one of Africa's most exclusive and prestigious neighborhoods.

Standing tall at 20 stories, Bijou Tower is a residential development that offers refined living spaces with each residential unit boasting unparalleled attention to detail, combining modern aesthetics with functional design. Indulge in a lifestyle that redefines luxury, as every corner of Bijou reflects a life of grandeur and comfort.

WELCOME
TO THE
CROWN
JEWEL OF
BANANA
ISLAND





THE TALLEST RESIDENTIAL BUILDING ON BANANA ISLAND

Bijou Tower stands as a symbol of elegance and stature, proudly holding the title of the tallest residential building in Banana Island. This distinctive feature sets Bijou Tower apart, offering residents breathtaking views and an elevated living experience that's unparalleled in this prestigious neighborhood.

HOUSE TYPES / FLOOR PLANS



1 BEDROOM APARTMENT



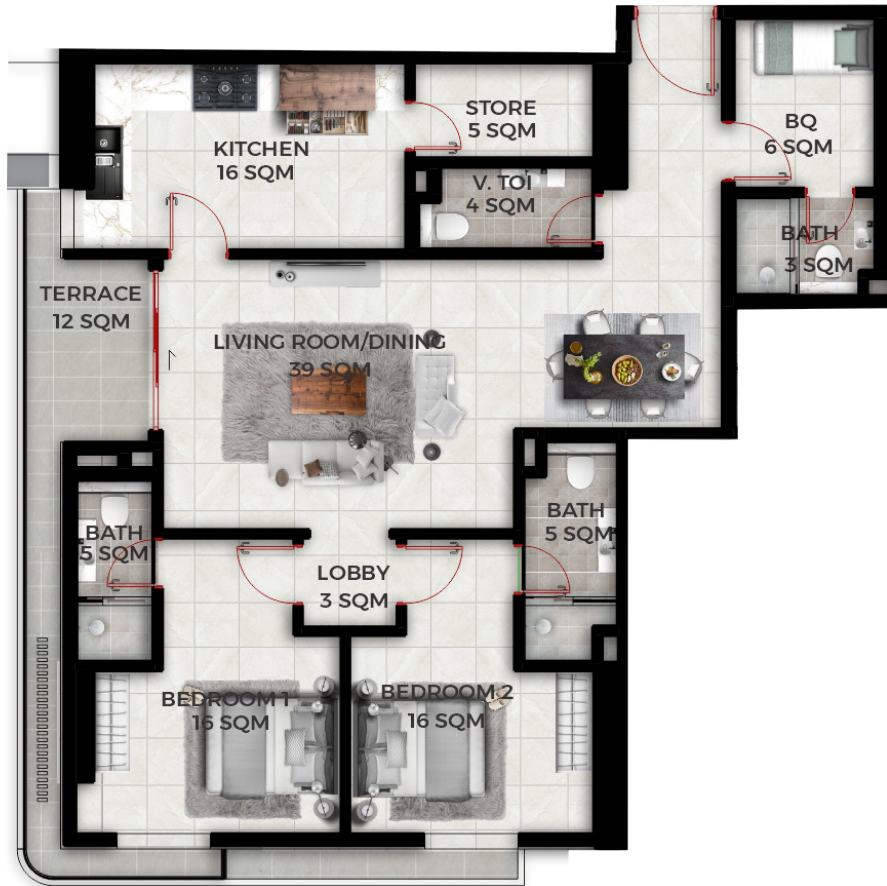
	SQM	SQFT
Living room/dining/kitchenette	41 sqm	441.3203 sqft
V/T	4 sqm	43.0556 sqft
Bedroom	27 sqm	290.6256 sqft
Bedroom's toilet	6 sqm	64.5835 sqft
Common area	21 sqm	226.0421 sqft
	99 sqm	1,065.62 sqft

1 BEDROOM APARTMENT



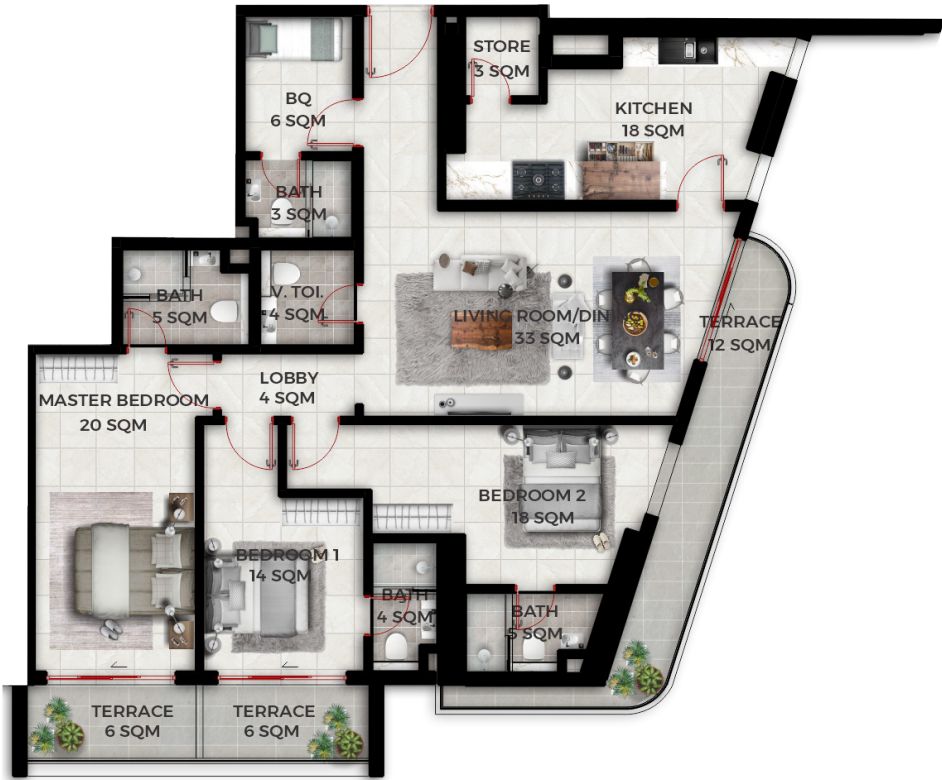
	SQM	SQFT
Living room / dining / kitchenette	50 sqm	538.19 sqft
Terrace	12 sqm	129.16 sqft
V/T	4 sqm	43.055 sqft
Bedroom	30 sqm	322.917 sqft
Bedroom's toilet	5 sqm	53.81 sqft
Common area	18 sqm	193.75 sqft
	119 sqm	1280.90 sqft

2 BEDROOM APARTMENT



	SQM	SQFT
V/T	4 sqm	43.055 sqft
Maid's room	9 sqm	96.8752 sqft
Living/Dining area	39 sqm	419.792 sqft
Living terrace	12 sqm	129.166 sqft
Kitchen	16 sqm	172.22 sqft
Kitchen store	5 sqm	53.819 sqft
Bedroom lobby	3 sqm	32.2917 sqft
Bedroom 1	21 sqm	226.0421 sqft
Bedroom 2	21 sqm	226.0421 sqft
Common area	25 sqm	269.0978 sqft
	155 sqm	1,237.84 sqft

3 BEDROOM APARTMENT



	SQM	SQFT
V/T	4 sqm	43.055 sqft
Maid's room	9 sqm	96.8752 sqft
Living/Dining area	33 sqm	355.209 sqft
Living terrace	12 sqm	129.166 sqft
Kitchen	18 sqm	193.75 sqft
Kitchen store	3 sqm	32.291 sqft
Bedroom lobby	4 sqm	43.055 sqft
Bedroom 1	23 sqm	247.569 sqft
Bedroom 2	18 sqm	193.75 sqft
Bedroom 2 terrace	6 sqm	64.583 sqft
Master bedroom	25 sqm	269.097 sqft
Master terrace	6 sqm	64.583 sqft
Common area	25 sqm	269.097 sqft
	186 sqm	2,002.08 sqft

3 BEDROOM APARTMENT



	SQM	SQFT
V/T	4 sqm	43.055 sqft
Maid's room	11 sqm	118.403 sqft
Living/Dining area	35 sqm	376.736 sqft
Terrace	87 sqm	936.46 sqft
Kitchen	18 sqm	193.75 sqft
Kitchen store	3 sqm	32.291 sqft
Bedroom lobby	6 sqm	64.583 sqft
Bedroom 1	23 sqm	247.569 sqft
Bedroom 2	20 sqm	215.278 sqft
Master bedroom	33 sqm	355.209 sqft
	240 sqm	2,583.33 sqft

3 BEDROOM APARTMENT



	SQM	SQFT
V/T	7 sqm	75.347 sqft
Maid's room	11 sqm	118.403 sqft
Living/Dining area	78 sqm	839.585 sqft
Terrace	225 sqm	2,421.87 sqft
Kitchen	22 sqm	236.8 sqft
Kitchen store	5 sqm	53.819 sqft
Bedroom lobby	9 sqm	96.875 sqft
Bedroom 1	34 sqm	365.973 sqft
Bedroom 2	30 sqm	322.917 sqft
Master bedroom	40 sqm	430.556 sqft
Walk-in-closet = 5 sqm	5 sqm	53.819 sqft
	466 sqm	5,015.98 sqft

MAISONNETTES



(lower floor)



(upper floor)

	SQM	SQFT
Common area	36 sqm	387.5 sqft
Lower Floor		
V/T	5 sqm	53.819 sqft
Entrance lobby	28 sqm	301.389 sqft
Maid's room	11 sqm	118.403 sqft
Living/Dining area	50 sqm	538.195 sqft
Terrace	21 sqm	226.042 sqft
Kitchen	20 sqm	215.278 sqft
Kitchen store	5 sqm	53.819 sqft
Bedroom 1	21 sqm	226.042 sqft
Upper Floor		
Family Lounge	28 sqm	301.389 sqft
Box room	9 sqm	96.875 sqft
Bedroom 2	27 sqm	290.625 sqft
Bedroom 3	23 sqm	247.569 sqft
Master bedroom	46 sqm	495.139 sqft
Walk-in-closet	6 sqm	64.583 sqft
Master terrace	18 sqm	193.75 sqft
	354 sqm	2,314.37 sqft

MAISONNETTES



(lower floor)



(upper floor)

	SQM	SQFT
Common area	55 sqm	592.015 sqft
Lower Floor		
V/T	3 sqm	32.29 sqft
Box room	3 sqm	32.29 sqft
Lobby	30 sqm	322.917 sqft
Maid's room	13 sqm	139.93 sqft
Living/Dining area	75 sqm	807.293 sqft
Kitchen	38 sqm	409.028 sqft
Kitchen store	4 sqm	43.055 sqft
Bedroom 1	42 sqm	452.084 sqft
Upper Floor		
Family lounge	28 sqm	301.389 sqft
Lobby	27 sqm	290.625 sqft
Box room	13 sqm	139.93 sqft
Bedroom 2	38 sqm	409.028 sqft
Bedroom 3	35 sqm	376.736 sqft
Walk-in-closet	9 sqm	96.875 sqft
Master bedroom	48 sqm	516.667 sqft
Walk-in-closet	7 sqm	75.347 sqft
	468 sqm	5.037.51 sqft

MAISONNETTES



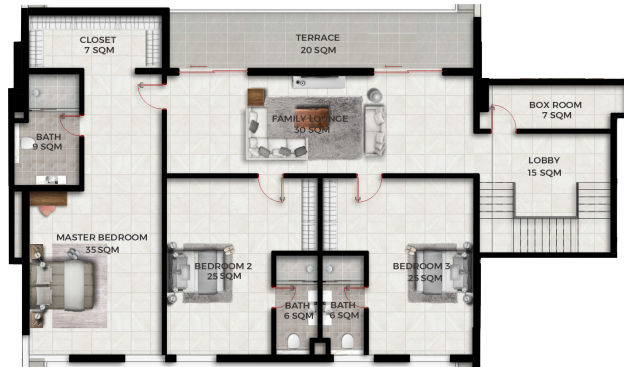
(lower floor)



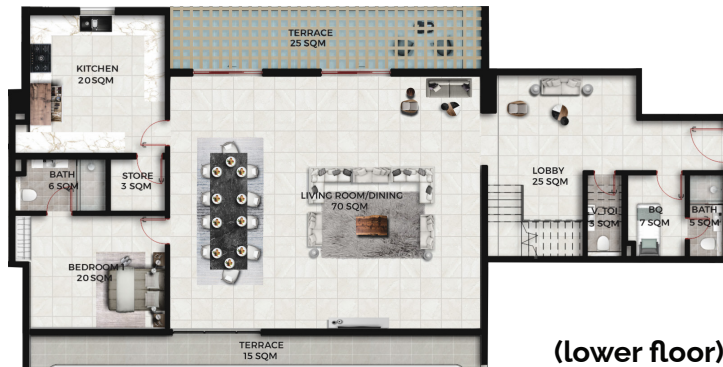
(upper floor)

	SQM	SQFT
Common area	55 sqm	592.015 sqft
Lower Floor		
V/T	3 sqm	32.29 sqft
Box room	6 sqm	64.583 sqft
Lobby	27 sqm	290.625 sqft
Maid's room	13 sqm	139.93 sqft
Living/Dining area	72 sqm	775 sqft
Kitchen	32 sqm	344.445 sqft
Kitchen store	14 sqm	150.694 sqft
Bedroom 1	49 sqm	527.43 sqft
Walk-in-closet	7 sqm	75.347sqft
Upper Floor		
Family lounge	27 sqm	290.625 sqft
Lobby	25 sqm	269.097 sqft
Box room	12 sqm	129.166 sqft
Bedroom 2	28 sqm	301.389 sqft
Bedroom 3	44 sqm	473.61 sqft
Walk-in-closet	7 sqm	75.347 sqft
Master bedroom	48 sqm	516.667 sqft
Walk-in-closet	9 sqm	96.875 sqft
	536 sqm	5,769.45 sqft

PENT HOUSE (4 BEDROOM)



(upper floor)



(lower floor)

	SQM	SQFT
Common area	78 sqm	839.585 sqft
Lower Floor		
V/T	3 sqm	32.29 sqft
Lobby	25 sqm	269.097 sqft
Maid's room	12 sqm	129.166 sqft
Living/Dining area	70 sqm	753.473 sqft
Terraces	40 sqm	430.556 sqft
Kitchen	20 sqm	215.278 sqft
Kitchen store	3 sqm	32.29 sqft
Bedroom 1	26 sqm	279.86 sqft
Upper Floor		
Family lounge	30 sqm	322.917 sqft
Lobby	15 sqm	161.458 sqft
Box room	7 sqm	75.347 sqft
Bedroom 2	31 sqm	333.68 sqft
Bedroom 3	31 sqm	333.68 sqft
Master bedroom	44 sqm	473.61 sqft
Walk-in-closet	7 sqm	75.347 sqft
	462 sqm	4.972.92 sqft

PENT HOUSE (4 BEDROOM)



(lower floor)



(upper floor)

	SQM	SQFT
Common area	78 sqm	839.585 sqft
Lower Floor		
V/T	8 sqm	86.11 sqft
Lobby	28 sqm	301.389 sqft
Staircase	12 sqm	129.166 sqft
Maid's room	18 sqm	193.75 sqft
Living/Living Terrace	114 sqm	1,227.085 sqft
Dining area	50 sqm	538.195 sqft
Kitchen	40 sqm	430.556 sqft
Kitchen store	6 sqm	64.583 sqft
Bedroom 1	23 sqm	247.569 sqft
Upper Floor		
Family lounge	40 sqm	430.556 sqft
Box room 1&2	15 sqm	161.458 sqft
Lobby	28 sqm	301.389 sqft
Bedroom 2	36 sqm	387.5 sqft
Bedroom 3	31 sqm	333.68 sqft
Walk-in-closet	5 sqm	53.819 sqft
Master bedroom	45 sqm	484.376 sqft
Walk-in-closet	7 sqm	75.347 sqft
Void	26 sqm	279.86 sqft
	629 sqm	6,770.49 sqft

PENT HOUSE (4 BEDROOM)



(lower floor)



(upper floor)

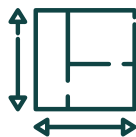
	SQM	SQFT
Common area	78 sqm	839.585 sqft
Lower Floor		
V/T	6 sqm	64.583 sqft
Lobby	38 sqm	409.028 sqft
Staircase	12 sqm	129.166 sqft
Maid's room	18 sqm	193.75 sqft
Living/Living Terrace	153 sqm	1,646.87 sqft
Dining area	40 sqm	430.556 sqft
Kitchen	32 sqm	344.445 sqft
Kitchen store	8 sqm	86.11 sqft
Bedroom 1	28 sqm	301.389 sqft
Upper Floor		
Family lounge	40 sqm	430.556 sqft
Box room	14 sqm	150.694 sqft
Bedroom 2	37 sqm	398.264 sqft
Bedroom 3	32 sqm	344.445 sqft
Walk-in-closet	10 sqm	107.639 sqft
Master bedroom	36 sqm	387.5 sqft
Walk-in-closet	9 sqm	96.875 sqft
Terrace	25 sqm	269.097 sqft
Void	26 sqm	279.86 sqft
	695 sqm	7,480.91 sqft



AMENITIES



SWIMMING POOL



LARGE
LIVING
SPACE



SPA



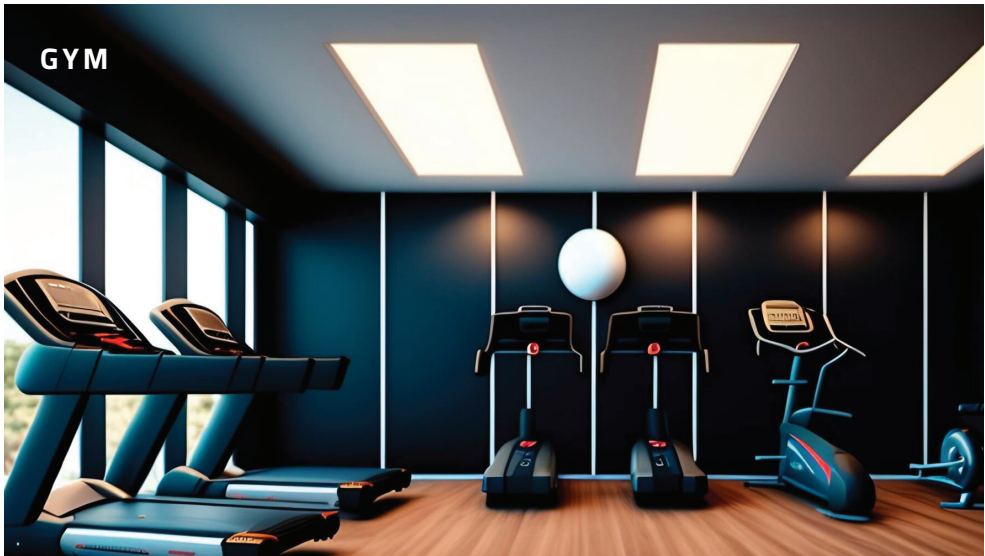
KIDS PLAY
AREA



FULLY-
FITTED GYM



24HRS
CONCIERGE
SERVICE



**KIDS
PLAY
AREA**



SPA

**POOL
AREA**



TOWER LAYOUT



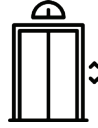


ELEVATION

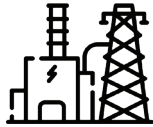
UTILITIES



Fibre optics
internet connection



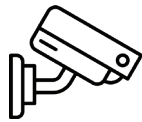
Fast speed
elevators



24/7 Power
system



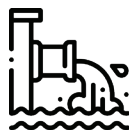
Top Level
security



CCTV
surveillance



Fire fighting
system



Central water
system



INVESTMENT OPPORTUNITIES

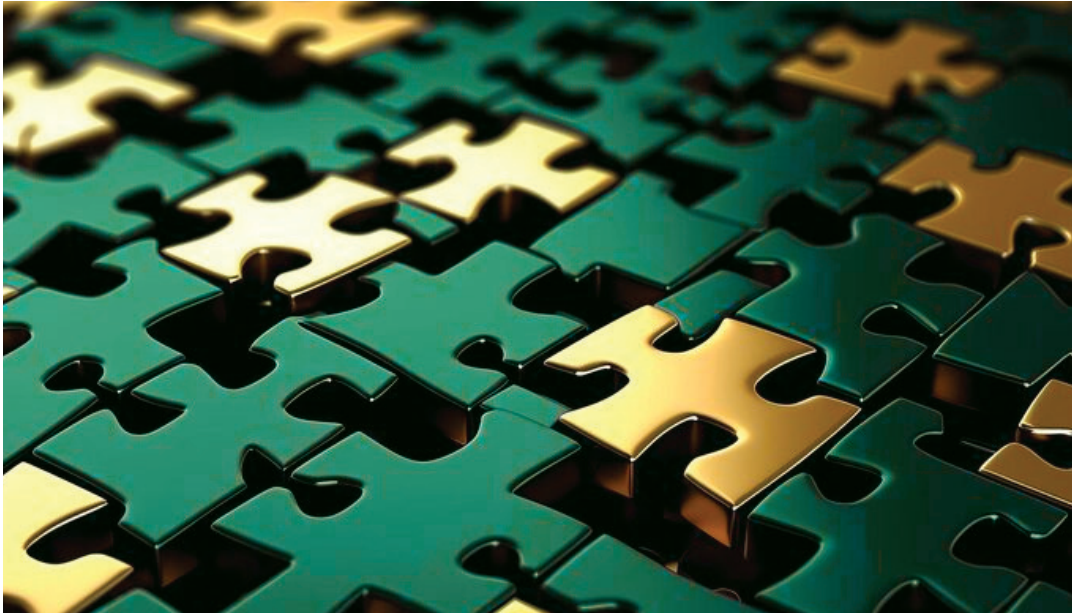
Investing in Bijou Tower isn't just an opportunity to own a home; it's an opportunity to secure your financial future in Banana Island, one of the most sought-after and valuable locations in Nigeria and Africa.

As the demand for exclusive properties in Banana Island continues to rise, owning a piece of Bijou Tower is a testament to both luxury and sound investment. Bijou Tower offers attractive returns on investment for both end-users and investors.

As an end-user, you can enjoy living in a premium and prestigious address with unparalleled comfort and convenience. You can also access the retail and lifestyle amenities within the tower and the island at your doorstep. As an investor, you can benefit from the high demand and appreciation of properties in Banana Island. You can also generate rental income from your units or sell them at a profit in the future.



PARTNERS



ARKLAND GROUP

Project developer

ASL CONTRACTORS:

Main contractor

YASNAS ENGINEERING LTD:

High pedigree piling company
for high end construction

ARKLAND MECHANICAL AND ELECTRICAL DIVISION (AMED)

MEP sub-contractor

APAVE LIBAN:

3rd party consultant

OTCE/VILNER:

Highly professional and renowned
firm handling structural designs

ITB PRE-CAST

Pre-cast/Pre-stressed slabs and beams

CONTACT US

OFFICE ADDRESS

House 4 castle fields, estate, block B,
plot 21 Augustine Anozie close off
Senrolu Road, Dideolu Estate
Victoria Island, Lagos Nigeria.

EMAIL

sales@arklandproperties.com

PHONE NUMBER

+2349130707070



HOW TO SUBSCRIBE

- Book a site tour
(Physical or Virtual)
- Fill the KYC form to indicate preferred interest.
- Receive an offer letter and execute.
- Make commitment deposit as stated in your offer letter.
- Your unit has been reserved.

CONGRATULATIONS
AND WELCOME ON BOARD



